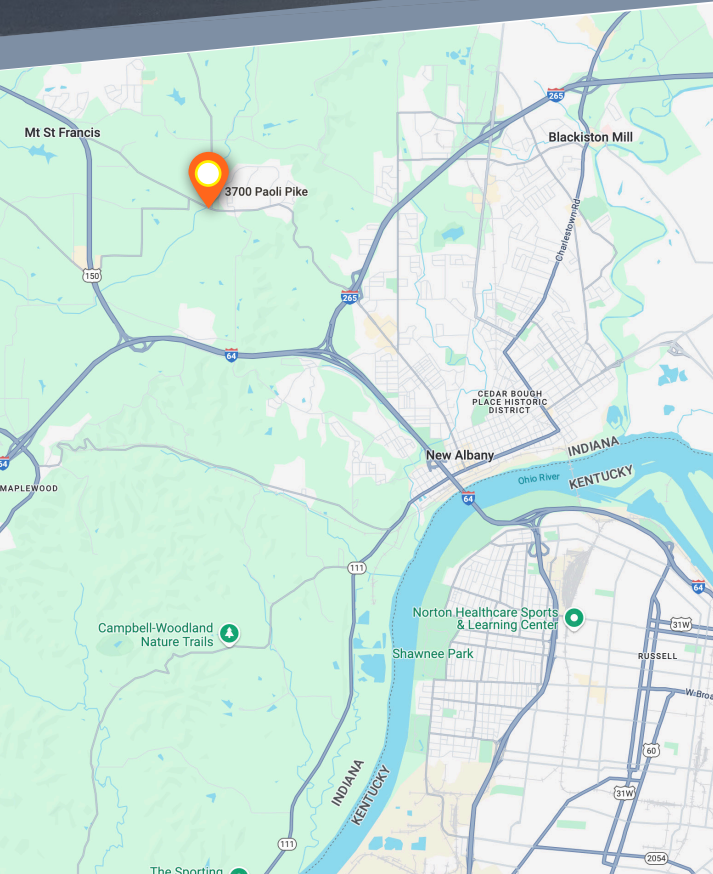




# FOR LEASE

3700 Paoli Pike, Floyds Knobs, IN 47119  
**SCHUPERT'S CORNER**

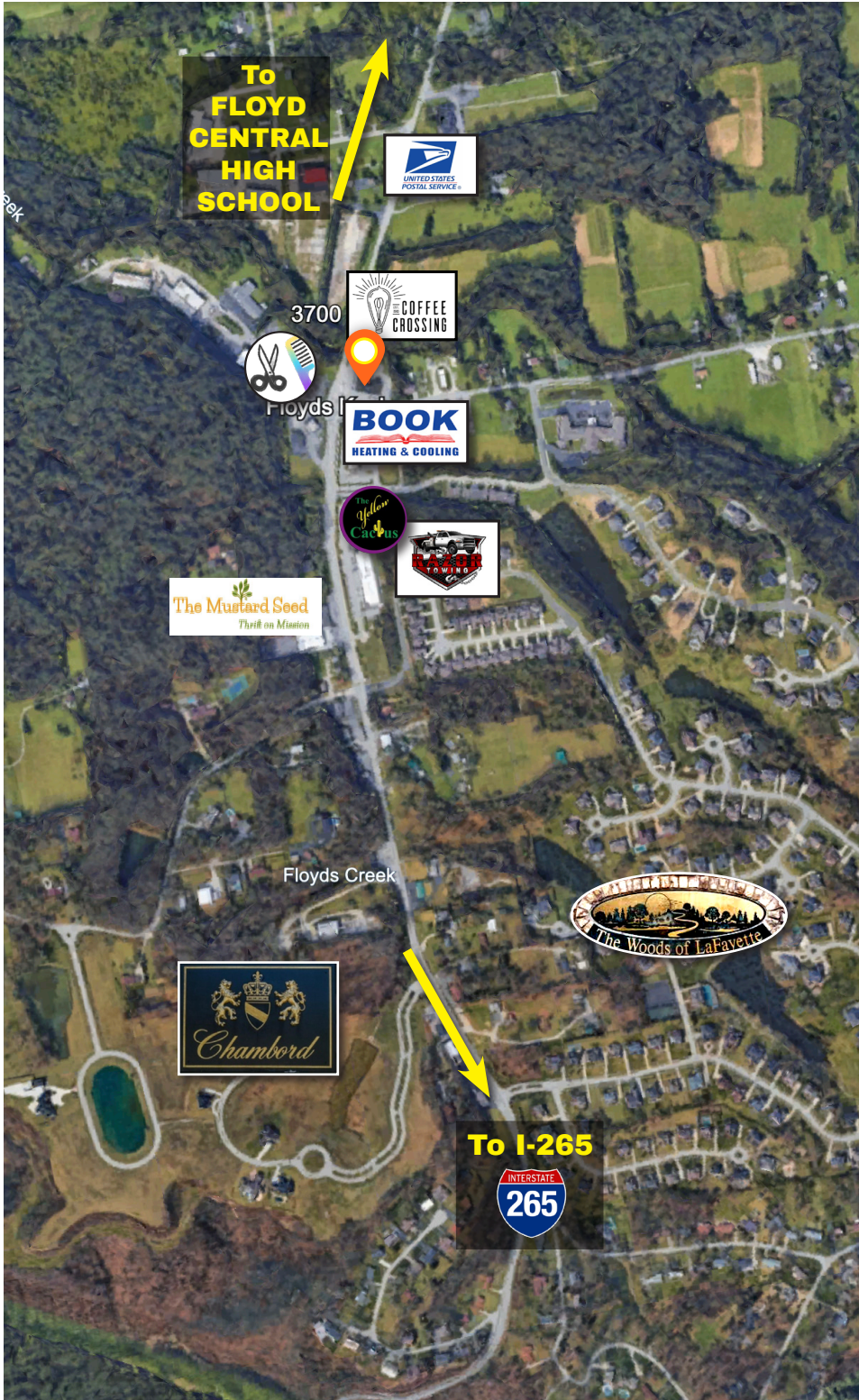


## BUILDING SPECIFICATIONS

- Newly renovated retail center
- High traffic location
- Retail / Office space available up to 2,200 sf.
- Restaurant space up to 4,200 sf. / outdoor patio approved
- High profile location at the corner of Paoli Pike and Scottsville Road in Floyds Knobs, IN



# SITE AERIAL



## SCHUPERT'S CORNER

This retail location has been a staple in Floyds Knobs since the early 1960s. With high traffic volume, this area is a crossroads connecting the north and south sides of Floyds Knobs with Highway 150, State Street and I-265.

The stoplight at the corner of Scottsville Road and Paoli Pike is an intersection leading to multiple subdivisions and schools in Floyd county.

The building facade has been reimaged with paint, natural stone and brick. New storefront windows, doors, canopies, and vibrant landscaping highlight an inviting exterior.

# SURVEY



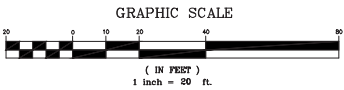
Arthur W. Enteman, Jr.  
Inst. No. 201809630

Indiana State Plane Coordinate System  
East Zone (1301)

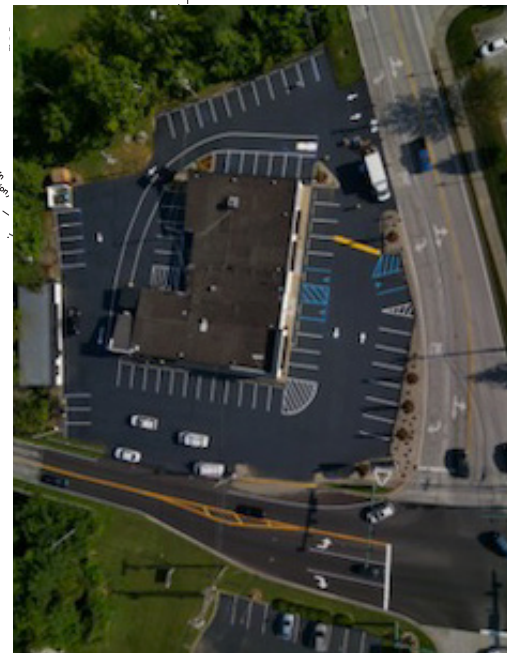
### LEGEND

- Utility Pole
- Guy Anchor
- Catch Basin
- Storm Drainage Manhole
- Water Meter
- Gas Meter
- Sanitary Clean-Out
- Traffic Signal Manhole
- Traffic Signal Pole
- A/C
- A/C Unit
- Overhead Electric Line
- Overhead Electric, Telephone & Cable Lines
- Existing Mag Nail With Washer  
Stamped "MATHENY LS IN 20800151"  
(Unless Otherwise Noted)
- Existing 5/8" By 24" Iron Pin  
With Cap Stamped "MATHENY LS IN 20800151"
- Computed Unmarked Point

Ex. 8"x12" Limestone  
Mon. With X-Out  
West 1/4 Corner  
of Section 20  
N: 1120439.9199  
E: 266035.4218



**LD&D**  
LAND DESIGN & DEVELOPMENT, INC.  
ENGINEERING • LAND SURVEYING • LANDSCAPE ARCHITECTURE  
109 WASHINGTON AVENUE, SUITE 101  
LOUISVILLE, KENTUCKY 40202  
PHONE: (502)464-9934



# FLOOR PLAN

